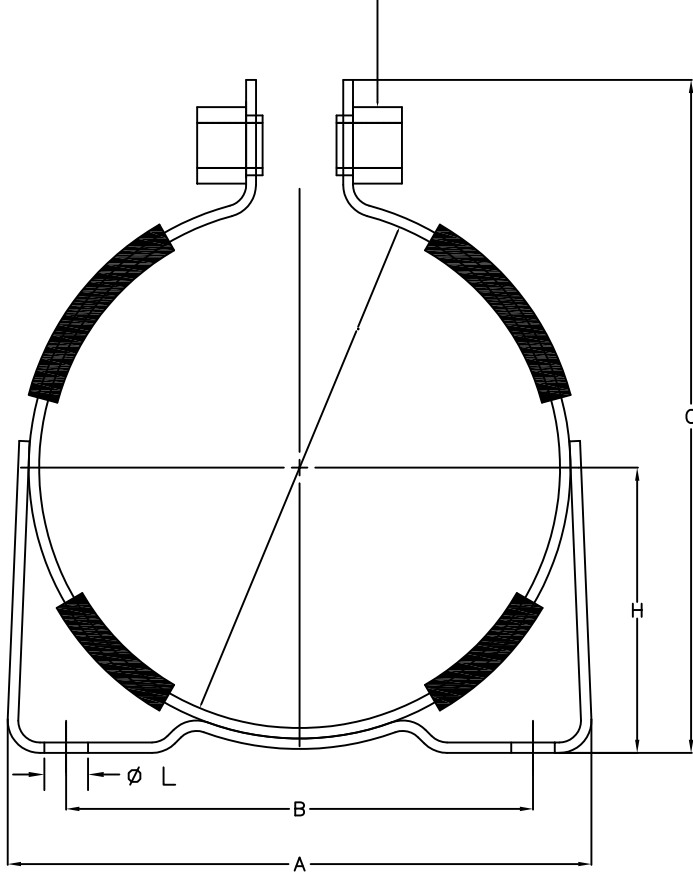


ACCUMULATOR MOUNTING BRACKET SPECIFICATIONS

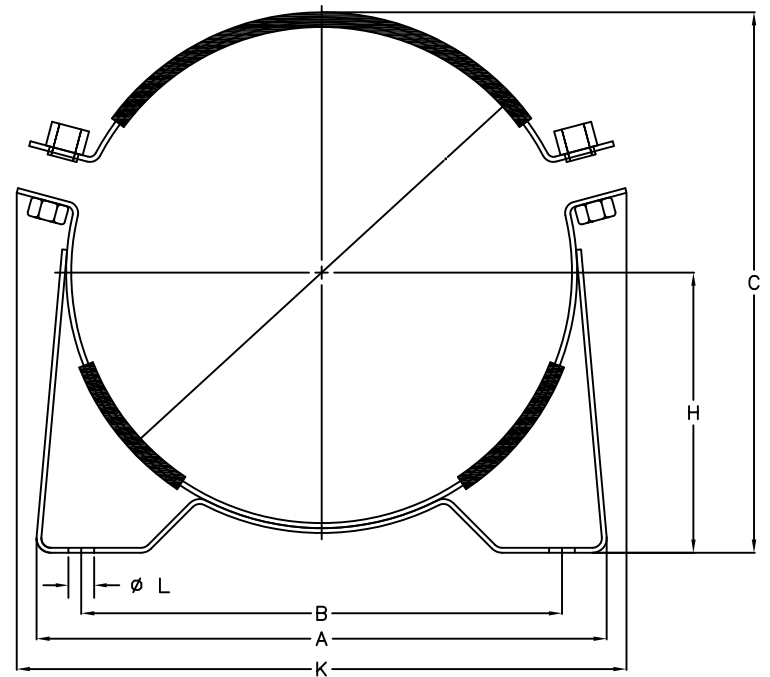
TORQUE TO 20 Nm (15 LB-FT)



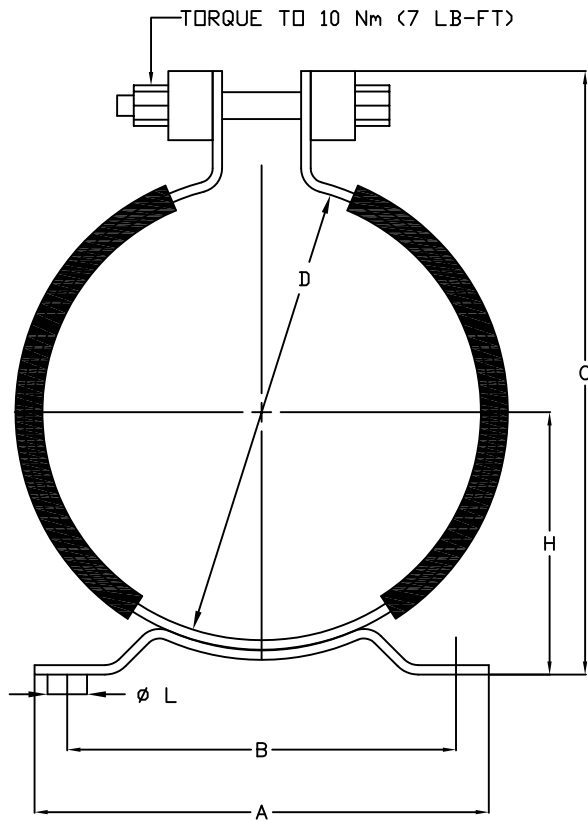
HEAVY - DUTY CLAMP, TYPE I

Part No.	METRIC	D. NOM	A	B	C REF.	H	L	WIDTH
T1-108	108mm	4.25	5.43	3.94	5.91	2.52	0.35	1.25
T1-114	114mm	4.49	5.35	3.94	6.50	2.87	0.35	1.25
T1-126	126mm	4.96	6.89	5.35	6.89	3.03	0.35	1.25
T1-146	146mm	5.75	6.69	5.35	7.52	3.27	0.35	1.25
T1-167	167mm	6.57	7.28	6.02	8.31	3.64	0.35	1.25
T1-175	175mm	6.89	7.60	6.30	8.74	3.92	0.35	1.25
T1-222	222mm	8.74	10.00	8.50	10.47	4.72	0.35	1.25

DOUBLE BOLT HEAVY - DUTY CLAMP, TYPE II

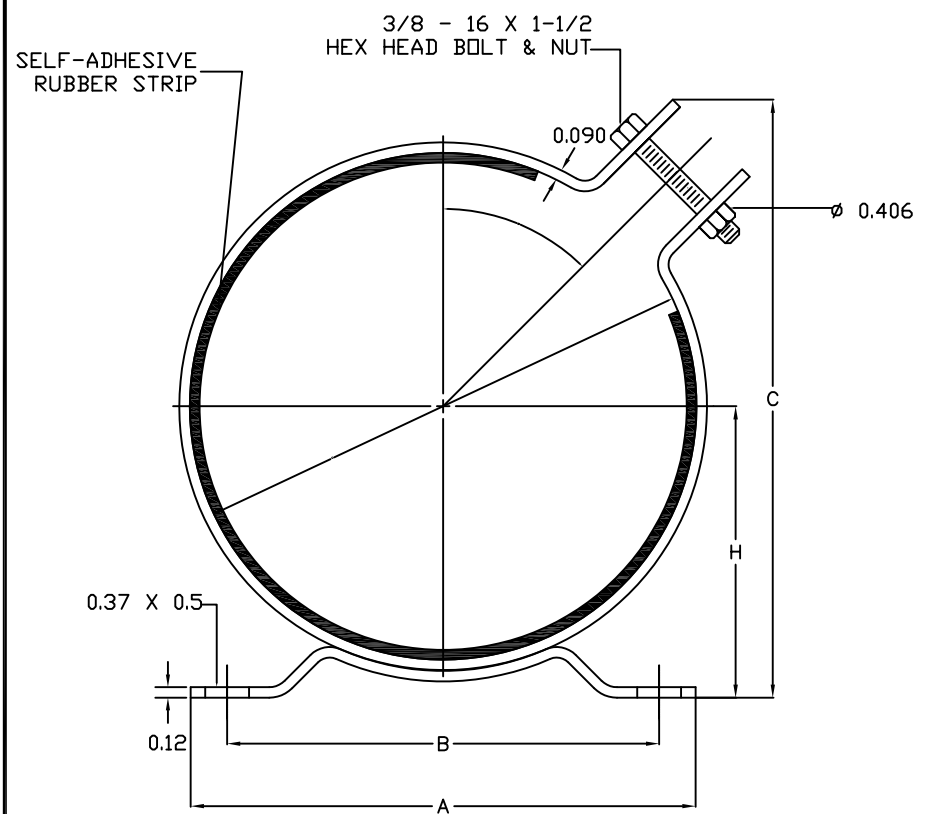


Part No.	METRIC	D. NOM	A	B	C REF.	H	K REF.	L	WIDTH
T2-206	206mm	8.11	10.24	8.19	9.06	4.65	10.83	0.59	1.25
T2-213	213mm	8.39	10.63	8.50	9.37	4.84	11.22	0.59	1.25
T2-219	219mm	8.62	10.55	8.50	9.45	4.84	11.22	0.59	1.25
T2-226	226mm	8.90	10.63	8.50	9.61	4.84	11.61	0.59	1.25
T2-242	242mm	9.53	10.55	8.50	10.43	5.35	12.00	0.59	1.25
T2-286	286mm	11.26	13.07	11.02	12.36	6.42	13.98	0.59	1.25
T2-310	310mm	12.20	13.07	11.02	13.11	6.69	14.96	0.59	1.25
T2-360	360mm	14.17	16.81	14.37	15.08	7.68	16.69	0.59	1.25



MEDIUM - DUTY CLAMP, TYPE III

Part No.	METRIC	D. NOM	A	B	C REF.	H	L	WIDTH	THICKNESS
T3-64	64mm	2.52	4.06	3.35	3.78	1.57	0.33	0.88	0.12
T3-74	74mm	2.91	4.06	3.35	4.13	1.77	0.33	0.88	0.12
T3-91	91mm	3.58	4.65	3.94	4.80	2.09	0.33	0.88	0.12
T3-105	105mm	4.13	5.04	4.33	5.35	2.36	0.33	0.88	0.12
T3-115	115mm	4.53	5.04	4.33	5.75	2.56	0.33	0.88	0.12
T3-121	121mm	4.76	5.04	4.33	5.98	2.68	0.33	0.88	0.12
T3-136	136mm	5.35	5.63	4.92	6.89	3.23	0.33	0.88	0.12
T3-145	145mm	5.71	5.63	4.92	7.17	3.39	0.33	0.88	0.12
T3-152	152mm	5.98	6.69	5.98	7.24	3.31	0.33	0.88	0.12
T3-160	160mm	6.30	6.69	5.98	7.68	3.43	0.33	0.88	0.12



LIGHT - DUTY HYDRAULIC SERIES, TYPE IV

Part No.	D. NOM	A	B	C REF.	H	WIDTH	E
T4-67	2.62	5.00	3.94	3.75	1.66	1.25	AS SPECIFIED
T4-86	3.38	5.00	3.94	4.48	2.10	1.25	AS SPECIFIED
T4-102	4.00	7.00	6.30	5.03	2.41	1.25	AS SPECIFIED
T4-121	4.75	7.00	6.30	5.70	2.78	1.25	AS SPECIFIED
T4-127	5.00	7.00	6.30	5.92	2.91	1.25	AS SPECIFIED

MPC P/N: FM Series

DWG BY: vkurek

DATE: 01.28.09



1201 S. Mercury Drive
Schaumburg, IL 60193
847-524-4400 www.mercprod.com
info@mercprod.com

REV.	DATE	CHANGE
	01.28.09	INITIAL RELEASE